

iCAN Mobility, Power to Go.

User's Manual

The front fairing has been removed for clearer illustration purposes.

If the following instructions cause any confusion, please visit our Amazon page for video assembly instructions.



Installation

The mobility scooter is delivered folded in the package. Please follow the instructions below to assemble it.

1. Steering Assembly

Loosen the lock nut (Fig. 1) at the base of the steering column, then adjust the column to the optimal driving position (Fig. 2).



FIG.1

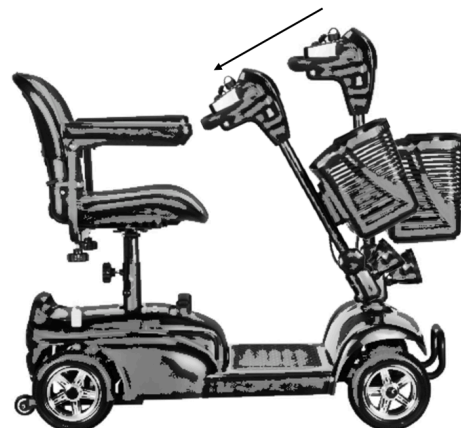


FIG.2

2. Seat Assembly

Remove the screws on the back of the seat (Fig.3).



FIG.3

Attach the seat to the seat rack using the four screws removed in the previous step (Fig. 4).

Note: Ensure the armrest adjuster aligns with the seat backrest.

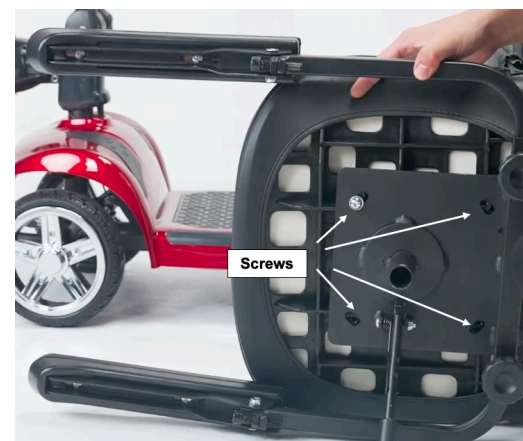


FIG.4

3. Arm Support Assembly

Loosen and remove the lock nut on the seat rack, then detach the armrests on both sides (Fig.5).

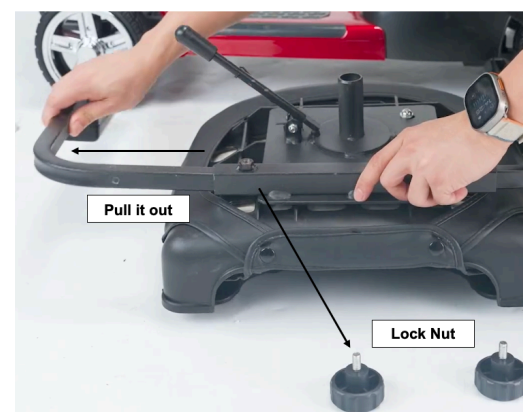


FIG.5

Rotate the arm rest 90 degrees, reinsert it into the slot, adjust the position and securely tighten the lock nut according to Fig.6.



FIG.6

4. Seat Assembly

Finally insert the seat unit into the main body of the scooter (Fig.7).



FIG.7

The front fairing has been removed for clearer illustration purposes.

If the following instructions cause any confusion, please visit our Amazon page for video assembly instructions.

The seat height can be adjusted by removing the seat pin, selecting a different pinhole, reinserting the pin, and securely tightening the lock nut (Fig.8).

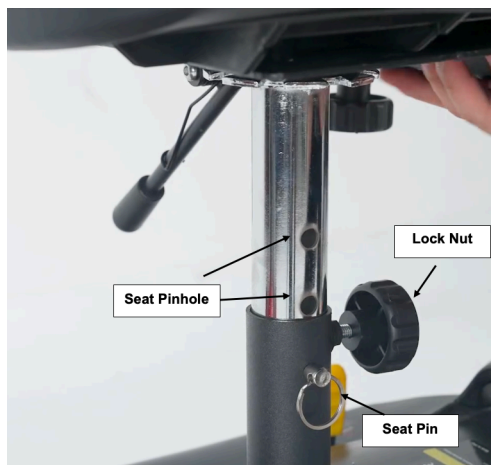


FIG.8

5. Basket assembly

Place the Basket and lock it in the slot at the front of the steering column (Fig.9).



FIG.9

6. Final assembly

The final assembly will be displayed as below in Fig.10.



FIG.10

EMC Declaration

Report No.: XMT0201909872L.

This mobility scooter complies with the Regulation EN 61000-6-1 / EN 61000-6-1 /EN 61000-6-1, the test result is pass.

Product Name: Mobility Scooter

Item No: X-02 Series (including X-02 and X-02D Fairing series)



WEEE

Note: Waste electrical products and batteries should not be disposed of with household waste. Please recycle where facilities exist.

Information and illustrations are subject to change. Ican reserves the right to alter the specification and product design at any time without notice.

Sale Representative Detail

This product is sold and customer serviced by:

iCAN Mobility Ltd UK and iCAN Products Ltd UK

Registered Address:

iCAN Mobility Ltd

302 Union Street

Torre, Torquay

TQ2 5QZ

United Kingdom

Tel: +44 (0)1803 328222 / 01803 659465

Web: icanmobility.co.uk

email: info@icanmobility.co.uk

All Rights Reserved.

1.Specification Sheet

Overall size (L*W*H)	1080*490*940mm
Battery	24V 12AH lead-acid battery
Scooter weight (N.W)	44kg
Maximum speed	7 km/h (4.4 mph)
Brake	Electromagnetic brake system
Weight capacity	120 kg
Ground Clearance	80 mm
Tyres	Φ 197*64mm solid tyre
Power of motor	24v 250w
Controller	24V 50A
Charger	DC 24V 2A
Max Grade Ability	15°
Running distance	20 km (12.5 mile)

*Range may be vary based on terrain, user's weight and battery condition.

2.Operations



FIG.11

The Ican Mobility Scooter features a simple and user-friendly operating system (Fig. 11) with the following controls:

a. **Power Adjuster:** Rotate the knob to adjust the power output level. The Turtle icon represents low power output, while the Rabbit icon indicates high power output.

b. **Power Switch:** Insert the key to turn the scooter on or off.

c. **Horn:** Press the green button to activate the horn.

d. **Headlight:** Press the red button to turn the headlight on or off.

e. **Throttle:** The throttle is a single lever that operates on both sides.

- Right side: Pull backward to drive forward and push upward to stop or reverse.
- Left side: Push forward to drive forward and pull backward to stop or reverse.

f. **Emergency Brake:** The scooter can be stopped by turning off the key. Avoid frequent use of this method in non-emergency situations, as improper use may damage the motor and control unit.

3.Gear

The Ican Mobility Scooter is equipped with two gears, controlled by the yellow lever (Fig. 12):

- **Drive Mode:** Push the yellow lever backward to connect the motor for normal driving.
- **Freewheel Mode:** Push the yellow lever forward to disconnect the motor, allowing the scooter to be moved manually, such as in the case of a flat battery.

Attention: Freewheel Mode can be only active when ignition switched off.



FIG.12



4-WHEEL MOBILITY SCOOTER X-02 Fairing Series Assembly Sheet



The 1 year guarantee for this product is active from the date of purchase.

Page.4

4. Charging

The battery is located under the seat and can be charged by connecting the cable.

To remove the battery, pull the handle located on the battery cover. **Since the battery unit is secured with Velcro underneath, a firm pull is required to detach it.**

Follow the steps below to optimize battery performance:

- During charging, the red light on the charger indicates that charging is in progress. When the green light turns on, charging is nearly complete. It is advised to continue charging the battery for an additional 1-2 hours.
- It is recommended to charge the batteries for 10 to 12 hours during the first use.
- Do not overcharge. Avoid leaving the battery connected for more than 24 hours, as this can cause damage.
- If the scooter is not in regular use, please charge the battery 1-2 times per month to maintain battery health.
- Do not interrupt the charging process before it's complete. Using the battery without fully charging it can shorten its lifespan.

Attention: Please turn off the power before charging.

5. Maintenance

- Avoid hitting or bumping control panels.
- Protect your scooter from prolonged exposure to extreme conditions such as excessive heat, cold, or moisture.
- Ensure the batteries sit flat in the battery tray.

- After daily use, remove the key to prevent unnecessary power consumption.
- Inspect all electrical connectors, including the charger's connectors, ensuring they are secure and free from corrosion.
- This scooter features a power-saving mode: if unused for 20 minutes, it will automatically shut off. To resume use, reinsert the key.
- All wheel bearings are pre-lubricated and sealed, requiring no additional lubrication.

6. Inclement Weather Precautions

WARNING! Avoid operating your scooter on slippery surfaces such as ice or snow. Doing so may result in injury and negatively impact the scooter's performance.

WARNING! Do not expose your scooter to moisture, including rain, snow, mist, or washing. Moisture can damage the scooter. If the scooter has been exposed to moisture, ensure it is completely dried before operating.

7. Troubleshooting

If the mobility scooter keeps beeping after switching it on or any other abnormal situation, restart it using the key until the beeping stops. Beeping while reversing is normal.

8. Warranty

All design and production processes for our products are managed in compliance with ISO 9001 standards to ensure exceptional quality.

iCAN Mobility LTD UK provides a standard one-year warranty effective from the date of purchase. The purchase date must be verified **by either a purchase invoice or a warranty card**. Please note that **bank statements are not accepted as proof of purchase**.

Failure to provide a valid invoice will void the warranty.

iCAN Mobility LTD UK reserves the right to interpret the warranty terms and conditions.

Warranty Coverage:

- Main frame structure
- Electrical and mechanical components
- Electric control system and controller
- Motor and gearbox
- Charger
- Connectors
- Battery (Special coverage: as a consumable item, the battery is warranted for 6 months from the date of purchase.)

Exclusions from Warranty:

- Normal wear and tear of ABS shrouds
- Wear and tear, including but not limited to coating and plating surfaces, natural fading of resins, etc.
- Consumable items, including but not limited to tyres, upholstery, seat covers, and lubricants
- Damage caused by improper operation, accidents, or negligence
- Damage resulting from inadequate maintenance or improper storage
- Damage due to unauthorised modifications
- External factors, including but not limited to pharmaceuticals, bird droppings, acid rain, flying stones, or metal particles
- Natural disasters, including but not limited to typhoons, floods, fires, and earthquakes

If you have any questions about the warranty or wish to make a claim, please contact iCAN MOBILITY LTD UK.