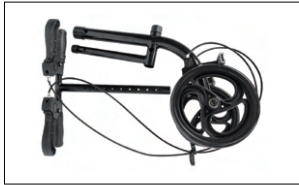
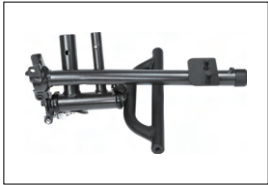


### Part list

The rollator is delivered partially disassembled in the box. Assembly is quick and straightforward, typically requiring 5 minutes to complete.



Rear wheel body



Front wheel body



Knee pad



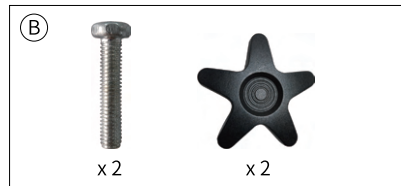
Wheels



Storage bag



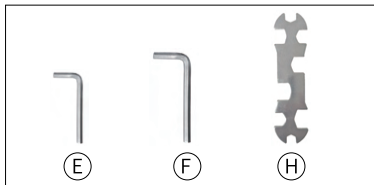
Wheel screw



Star nut and bolt

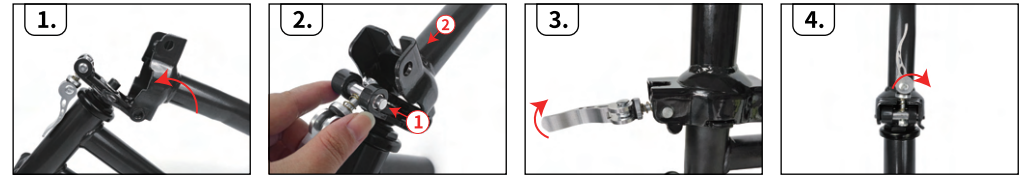


Star screw

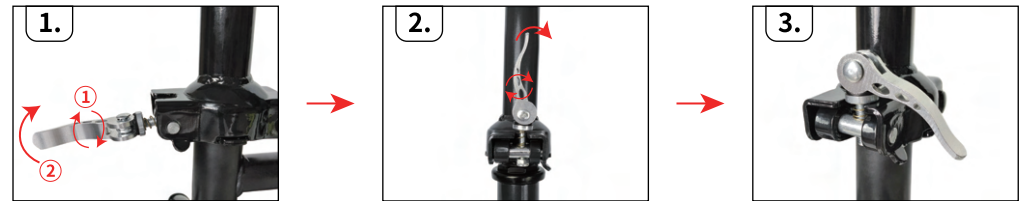


Installation tool

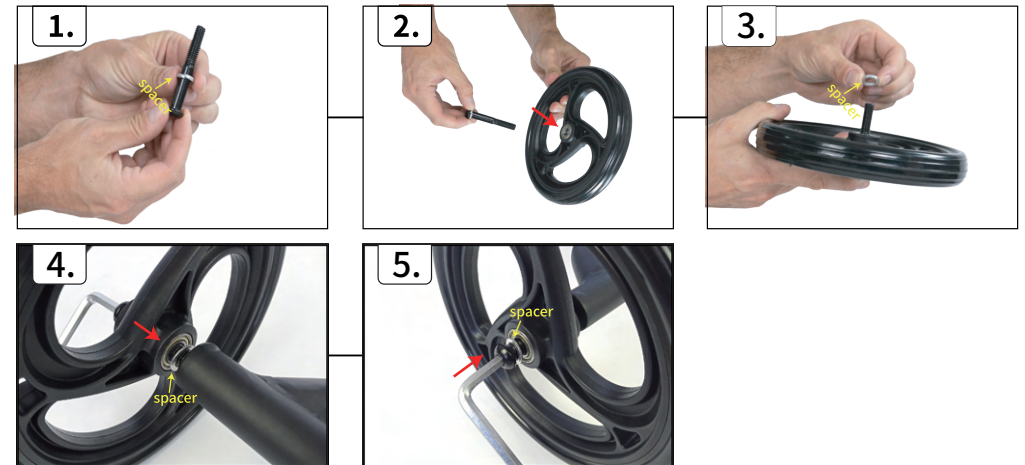
**Step One** (Lifting the front bar of the front wheel body till straight up and secure it with the locking lever as showed.)



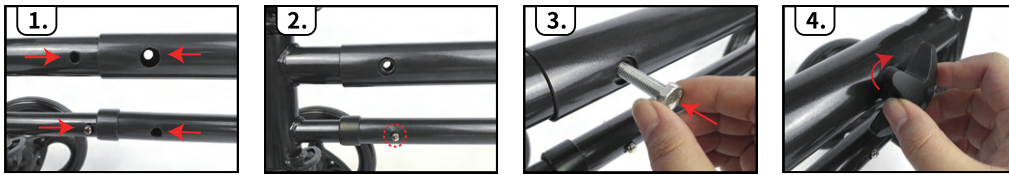
Turn the locking lever to adjust the tightness of the locking mechanism and secure it if you find it too tight or too loose.



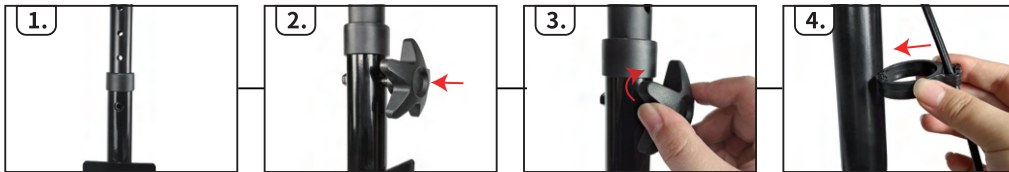
**Step Two** (Install the wheels and the front wheel body with the wheel screw A and tighten it with the installation tools F.)



**Step Three (Install the front wheel body and rear wheel body together till the marble is secured then secure it with the star nut and bolt B.)**



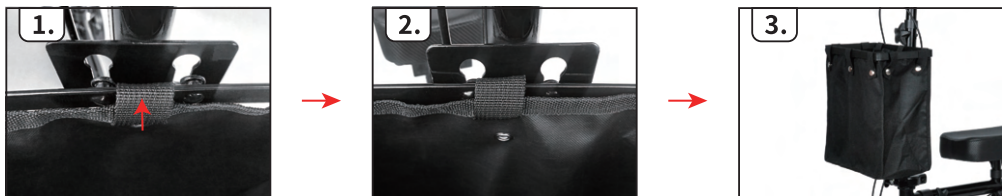
**Step Four (Install the lifting lever with the front wheel body and secure it with the star bolt O, attach the brake cable buckle with the front wheel body as showed.)**



**Step Five (Install the knee pad with the rear wheel body and secure it with the star nut and bolt B.)**

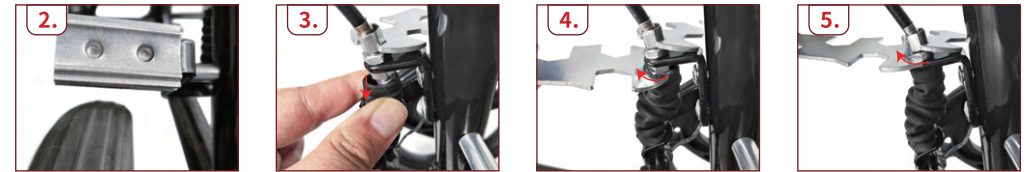


**Step Six (Attach the storage bag with the front wheel body in right position.)**



## BRAKE ADJUSTMENT

**If you find the brake block is too high,** Please adjust the handle bar into highest position then use the hex wrench to turn the nut below of brake frame into clockwise direction then turn the nut above into clockwise direction to tighten the brake cable in right position if you find the brake block is too high and fail to brake .



**If you find the brake block is too low,** Please adjust the handle bar into highest position then use the hex wrench to turn the nut below of brake frame into anticlockwise direction then turn the nut above into anticlockwise direction to loose the brake cable in right position if you find the brake block is too low and fail to brake .



#### Maintenance

1. Clean the exterior of the rollator walker regularly using a soft, damp cloth. Do not use abrasive cleaners or caustic chemicals.
2. Periodically inspect all parts for looseness, wear, or damage. If any issues are found, correct them before using the rollator.
3. If the rollator has not been used for an extended period, store it in a cool, dry, and safe place.

#### Warning

1. Before use, ensure the rollator is fully unfolded and securely locked into position.

#### One-Year Limited Warranty

Thank you for choosing our rollator. We are committed to providing high-quality products and support. This rollator is covered by a one-year limited warranty from the date of original purchase, subject to the terms and conditions below.

#### Warranty Coverage

This warranty covers defects in material or manufacturer defect under normal use and maintenance. During the warranty period, we will repair or replace, at our discretion, any part that proves to be defective in material or manufacturer defect.

#### What Is Covered

- Structural frame
- Seat and backrest components (not leather related wear and tear)
- Braking system
- Handrails

#### What Is Not Covered

- Normal wear and tear (e.g., tires, grips, brake pads)
- Damage caused by misuse, abuse, accidents, or unauthorized modifications
- Improper storage or lack of maintenance
- Damage due to exposure to moisture, extreme temperatures, or corrosive environments
- Consumables or accessories not supplied by the manufacturer

#### Conditions for Warranty Service

- The warranty is valid only for the original purchaser and is non-transferable.

- Proof of purchase (receipt or invoice) is required for all warranty claims.
- The product must be used in accordance with the user manual and assembly instructions.
- Any unauthorized repairs or modifications will void the warranty.

#### How to Claim

If a defect arises during the warranty period, please contact our customer service team or the retailer from whom you purchased the rollator. Provide proof of purchase and a description of the issue. We may require photos or inspection to validate the claim.

#### Extended Warranty Option

We offer an option to extend the standard warranty to 3 years for a fixed fee.

If you are interested in purchasing an extended warranty, please contact iCAN Mobility Ltd for more information.

#### Sale Representative Detail

This product is sold and customer serviced by:

iCAN Mobility Ltd UK and iCAN Products Ltd UK

Registered Address:

iCAN Mobility Ltd

302 Union Street

Torre, Torquay

TQ2 5QZ

United Kingdom

Tel: +44 (0)1803 328222 / 01803 659465

Web: [icanmobility.co.uk](http://icanmobility.co.uk)

email: [info@icanmobility.co.uk](mailto:info@icanmobility.co.uk)

Youtube Channel: [@iCANMobilityUK](https://www.youtube.com/@iCANMobilityUK) (Watch us on YouTube for instructions)

All Rights Reserved.



#### Did You Know?

iCAN Mobility offers a wide range of mobility scooters - including portable models, folding scooters, high-performance scooters and powered wheelchairs.

Explore the full range at [icanmobility.co.uk](http://icanmobility.co.uk).

